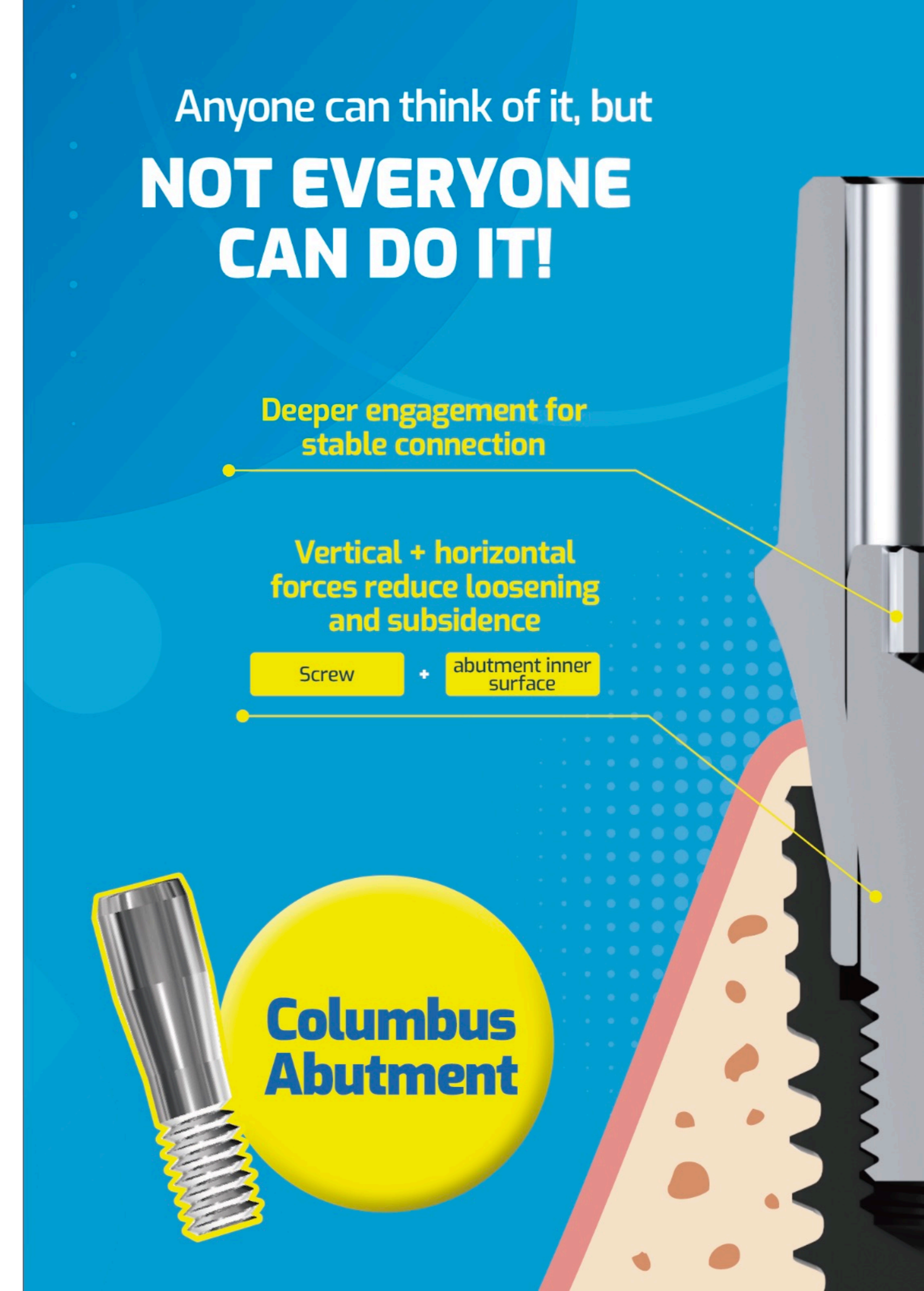


Room 502, 5F, 117, Gachon-ro, Mulgeum-eup, Yangsan-si,
Gyeongsangnam-do, Republic of Korea
TEL +82-55-781-1238 FAX +82-55-781-1239
shimon.kr



**COLUMBUS
ABUTMENT**



Anyone can think of it, but
**NOT EVERYONE
CAN DO IT!**

Deeper engagement for
stable connection

Vertical + horizontal
forces reduce loosening
and subsidence

Screw

+

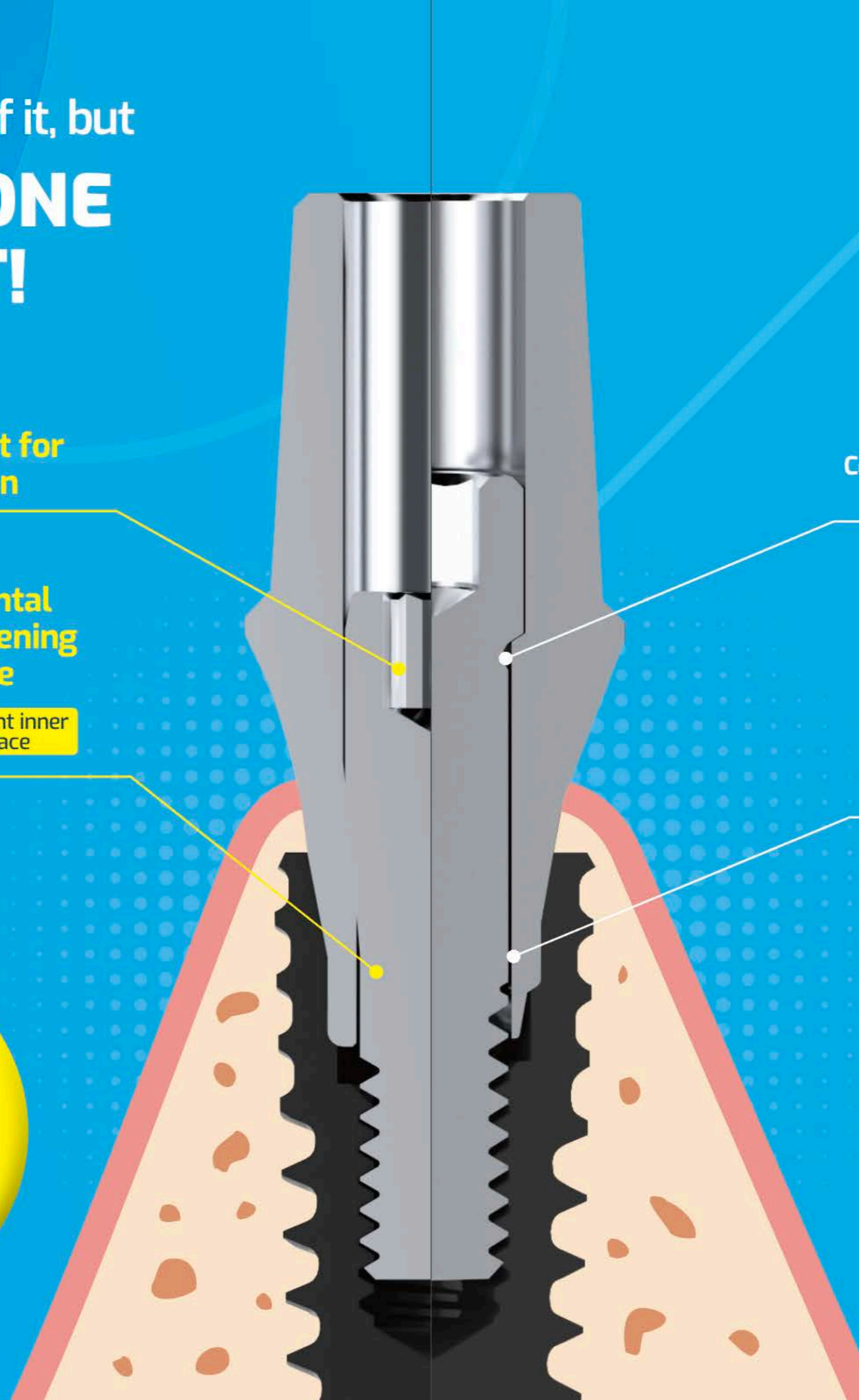
abutment inner
surface

Connection relies only
on vertical force

Gap occurrence

**Columbus
Abutment**

**Conventional
Abutment**



SB FIXTURE

Stress Free

- Reduces compression pressure on hard cortical bone.
- Improves stress distribution.
- Elevate BIC in the cortical part during functioning.

Smart Insertion

- Fast and controlled penetration into bone.
- Specific screw secures stability in all bone types.

Save Bone

- Maximize bone preservation
- Apex with drilling blades enables smaller osteotomy.
- Dome type apex makes sinus floor elevates safely.

Sustainable Beauty

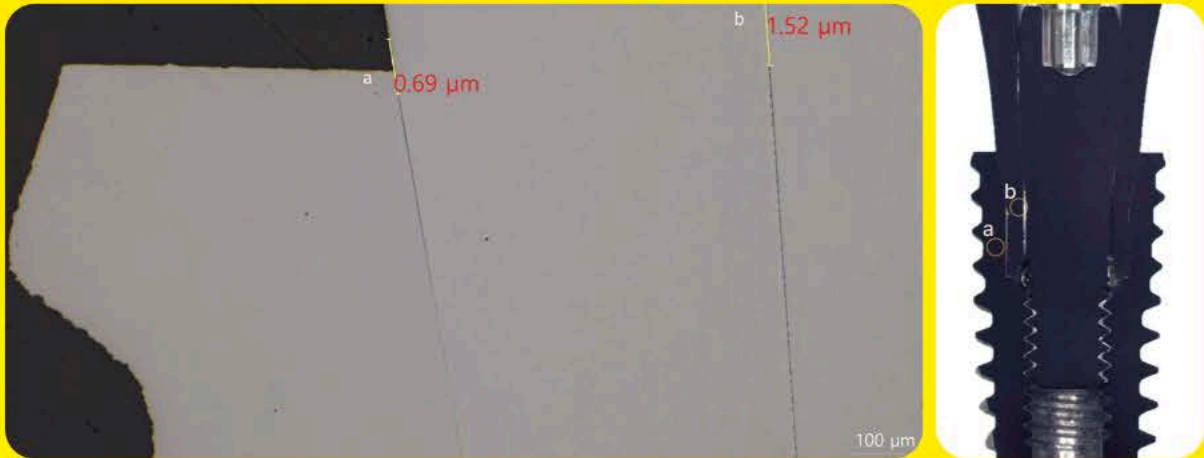
- Simple restoration process, digital and conventional.
- Prosthetic flexibility, stock abutment and customs.
- Reliable teeth white esthetics, single and full missing case.

Simple Abutment

- One connection in every diameter.
- Platform switching concept makes soft tissue healthy.
- Everlasting gingival pink esthetics.

Stable Connection

- 11' morse taper connection with hexagonal interlocking.
- Secure and stable fit between fixture and abutment.
- Tight sealing prevents joint instability and microbial leakage.



SB Drill Kit

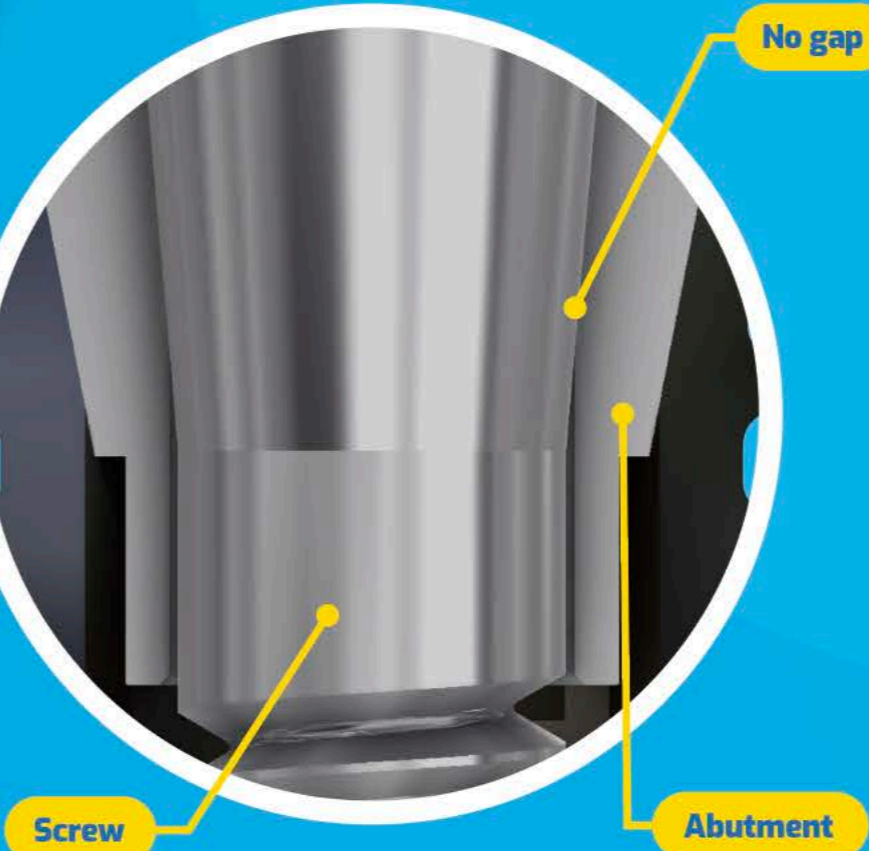


Implant Surgical Kit

SB assembles surgical tools systematically and ergonomically.
SB categorizes 6-step drilling sequences as pointing, drilling & depth control, tapping, pick-up, tightening, covering, and also 5 special drills for specific situation such as sinus floor elevation, bone harvest, path changing etc.
The SB Implant Surgical Kit itself covers almost every situation without a huddle.



Columbus Abutment



**NO SINK DOWN**

**NO SCREW LOOSENING**

**NO STRESS**

**Columbus Pre-mill Abutment**

**Columbus Abutment**

**Columbus customized Abutment (CNC)**

**Screw retained abutment**

TORQUE LOOSENING TEST

